

Quantification of Neutral Cysteine Protease Bleomycin Hydrolase and its Localization in Rat Tissues

Yayoi Kamata, Yoshiko Itoh, Akane Kajiya, Sachiyo Karasawa, Chie Sakatani, Susumu Takekoshi, R. Yoshiyuki Osamura and Atsushi Takeda

J. Biochem. (Tokyo) 2007; 141: 69–76; doi:10.1093/jb/mvm005

The publishers would like to apologize for erroneously printing figure 4 of this article in black and white. It is reproduced in colour below.

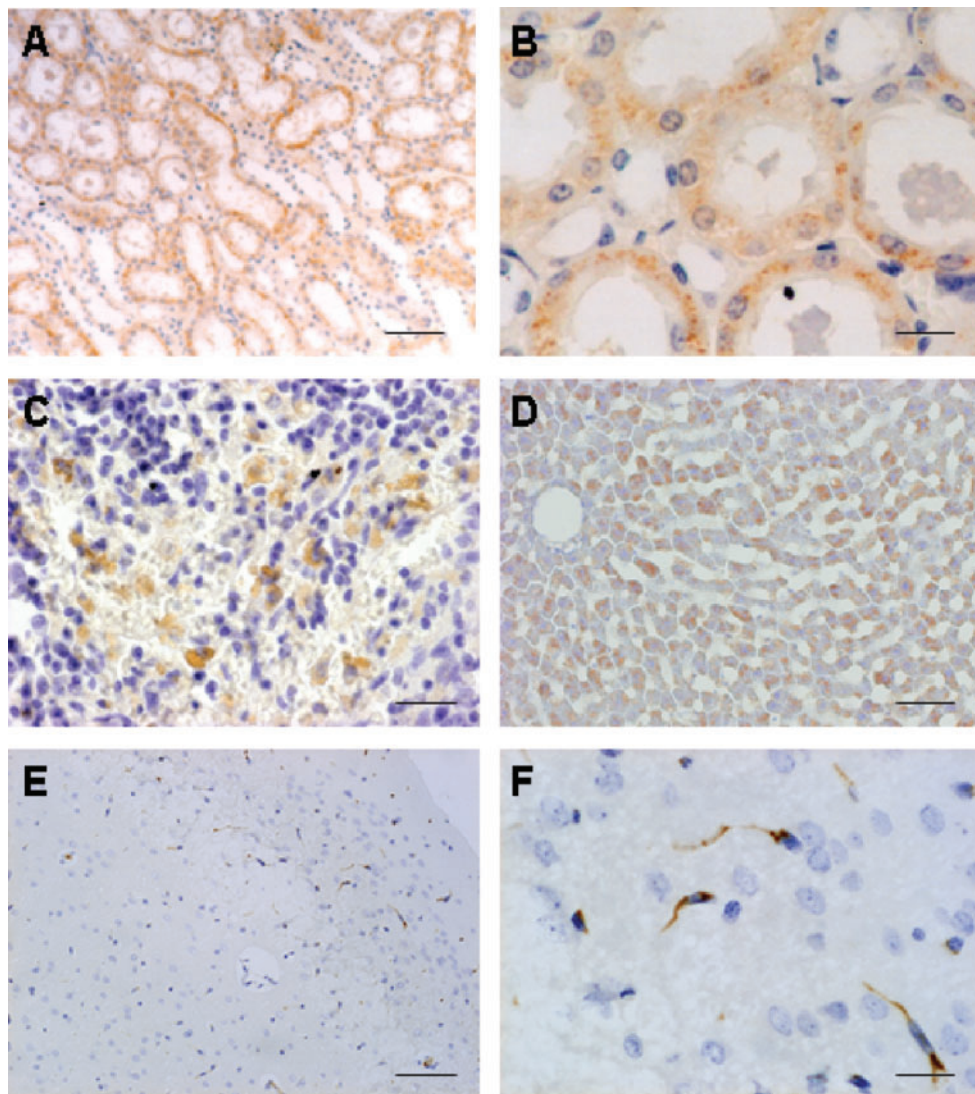


Fig. 4. **Immunohistochemical localization of BH in rat tissues.** (A) Kidney. The cortex of the kidney was stained positively. (B) High magnification of (A). Granular immunoreactivity was observed in the cytoplasm of epithelial cells of both distal and proximal tubular cells. (C) Spleen. BH-positive staining cells were present in the red pulp. (D) Liver.

BH was positive in the cytosol of hepatocytes. (E) Brain. Neuronal and/or non-neuronal cells were positive after pretreatment with trypsin. (F) High magnification of (E). The scale bars indicate (A) 20 μm , (B) 5 μm , (C) 6.67 μm , (D) 6.67 μm , (E) 20 μm , and (F) 6.67 μm .